

**Beaver Wash Prescribed Fire
Richfield Field Office, Bureau of Land Management**



Contact Information:
Linda Chappell 435-896-1595 or lchappell@fs.fed.us

Planned Burn Date:
Winter 2009 – 2010

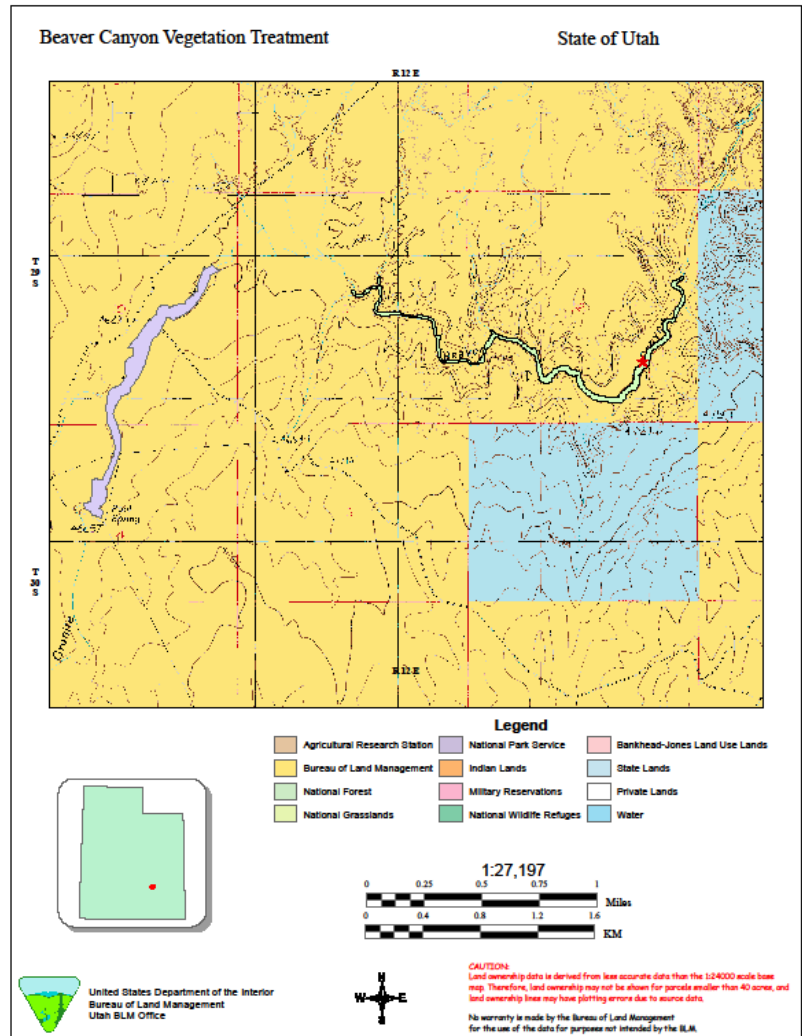
Location: The 60 acre project is located about 12 miles southeast of Hanksville, Utah.

Legal Description: The project area is within T 29 S., R 12 E., Section 13, 24, 25, 26, 34, and T 29 S., R 13 E., Section 19

Project Description:

The Beaver Wash project consists of 0.6 miles of standing dead tamarisk located in the bottom of Beaver Wash. This section of Beaver Wash fluctuates from about 30' to 60' wide. The Beaver Wash project has been identified to reduce the standing dead tamarisk which is non-native vegetation currently creating increased fuel loading. An increased wildfire hazard is occurring due to herbicide killing tamarisk which has left the standing dead fuel available to burn.

Due to the increased fire hazard of dead and dying herbicide-treated vegetation, the Richfield District wilderness and fuels programs are creating fuels breaks in riparian corridors to prevent the spread of invasive non-natives and catastrophic wildfires while also protecting public and firefighter safety. This fuel break involves the complete removal of dead tamarisk through prescribed burning.



United States Department of the Interior
Bureau of Land Management
Utah BLM Office

Map created on Aug 04, 2008