



## Center Creek Mechanical Project

Bureau of Land Management, Richfield Field Office

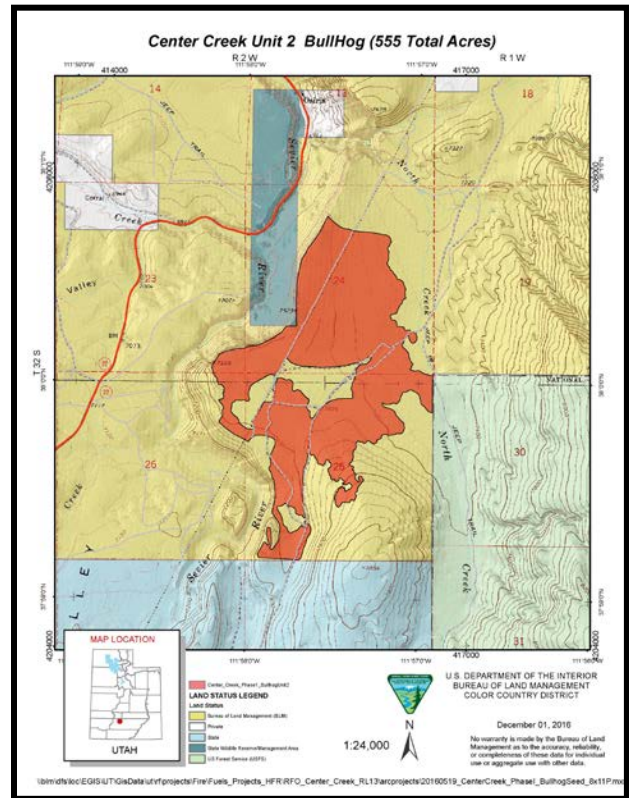
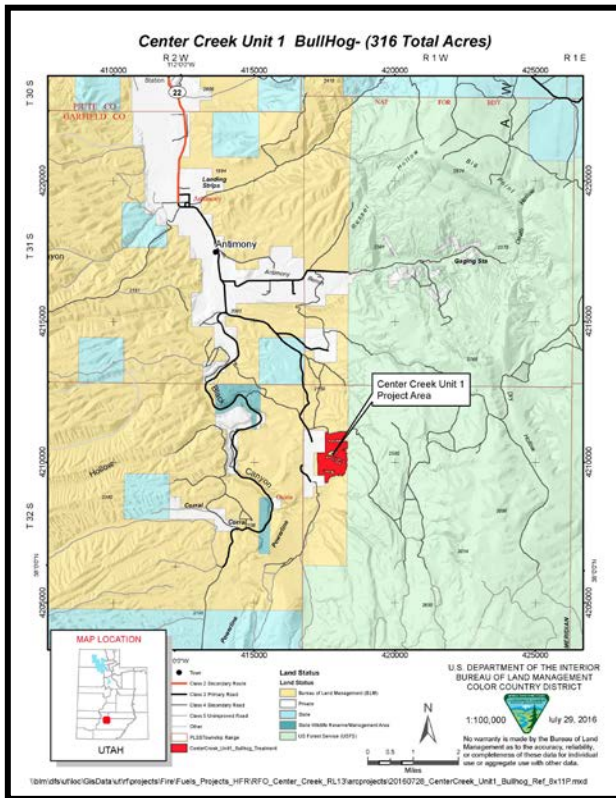
**Contact Information:** Bob Bate 435-896-1513 [rbate@blm.gov](mailto:rbate@blm.gov) or Jill Ivie 435-896-1573 [jiwie@blm.gov](mailto:jiwie@blm.gov)

**Planned Date:** December 1, 2016 – February 18, 2017

**Planned Location:** This project is located in Garfield County, east of Hwy 22 (Black Canyon), and south of Antimony, Utah.

**Legal Description:** Unit 1: Township 32 South, Range 1 West, Sections 7 & 18;  
 Unit 2: Township 32 South, Range 2 West, Sections 23, 24, 25, 26

**Lat/Long:** Unit 1: 38°, 2', 19.8" N; 111°, 56', 42.7" W / Unit 2: 38°, 0', 35.0" N; 111°, 57', 46.3" W



**Project Description:** Starting in December 2016, the Bureau of Land Management - Richfield Field Office, will treat approximately 900 acres. The Center Creek project is a vegetation management project to improve watershed conditions, improve habitat, and to reduce hazardous fuels. Vegetation will be removed in a mosaic pattern, leaving islands of treated and untreated vegetation, utilizing a mechanical chipper often referred to as a “Bullhog”.

Removal of encroaching pinyon and juniper will benefit the environment by enabling more productive, desirable grasses, forbs and shrubs to return to the site. To facilitate this, a mix of grasses and forbs suitable to the site will be seeded. Seeding will also reduce soil erosion, improve habitat, improve water quality and quantity, reduce the risk of invading cheat grass, and lower the risk of wildland fire negatively impacting the private property of Center Creek Ranch and nearby community of Antimony.